

## Bright Hope Haiti Earthquake Relief Plan

### PURPOSE:

In response to the Haiti 7.0 magnitude earthquake on Tuesday January 12, 2010, Bright Hope has responded with immediate relief and plans for development programs. Our plan has specific areas of focus that meet the overall mission and vision of Bright Hope and will assist churches to impact their communities in the name of Jesus Christ. Our efforts focus on two locations in Port-au-Prince and the internally displaced people now living in the northern town of Pignon.

We believe this mission is laid upon us by God, to impact and transform the lives of the people of Haiti through physical needs, economic opportunities and spiritual leadership. We believe that Bright Hope's 15 years of experience and our expansive network of churches in Haiti uniquely positions us to respond to this disaster.

### OBJECTIVE:

To effectively work through existing and new church partnerships to identify, resource and share Hope to families, individuals, churches and poor communities who have been devastated by the earthquake on January 12<sup>th</sup>.

### TIMELINE:

Bright Hope has been in Haiti for over 15 years and expects to remain in mission work there indefinitely. The first phase of immediate relief assistance began two days after the earthquake struck. The relief aid phase will continue at least until March 31<sup>st</sup> (77 days from the start of relief efforts). After a period of assessment we have developed further relief efforts and a long-term strategy. These two phases overlap and will continue to evolve as we seek to meet the ongoing needs that are reported by our field staff and church leaders.

### REPORTING, ACCOUNTABILITY, AND OUTCOME MEASUREMENTS

Regular contacts with the pastors, partners and our Partnership Developer will update the Bright Hope leadership on project progress. Written reports are required. Financial

accounting will be handled by Bright Hope Staff, overseen by a Certified Public Accountant and annually monitored by an independent audit organization. Evaluation of the project, plans, budgets and outcome will be continually reviewed by Bright Hope leadership for additions, corrections or changes to the planning process.

## **BACKGROUND**

Haiti is the poorest country in the Western Hemisphere with a population of 9.242 million people. 56% of the people live on less than \$1.00 per day, 78% on less than \$2.00 per day. The devastation of the earthquake left 1 million people without homes.

Recent estimates put the number of Internally Displaced People (IDP) expected to leave Port-au-Prince at 1 million people. Our own church partner in Pignon says the population of his area has doubled to 65,000 people within 7 days of the quake. This situation places a tremendous strain on towns like Pignon, so much that UN officials are now warning of rural locations experiencing “food insecurity”.

There are still security issues in PAP and so Bright Hope has chosen to centralize its base of service in Pignon to service both the Port-au-Prince church partners and the IDPs in Pignon.

**Haiti**



### **Partner Overview in two locations:**

#### **Port-au-Prince (PAP)**

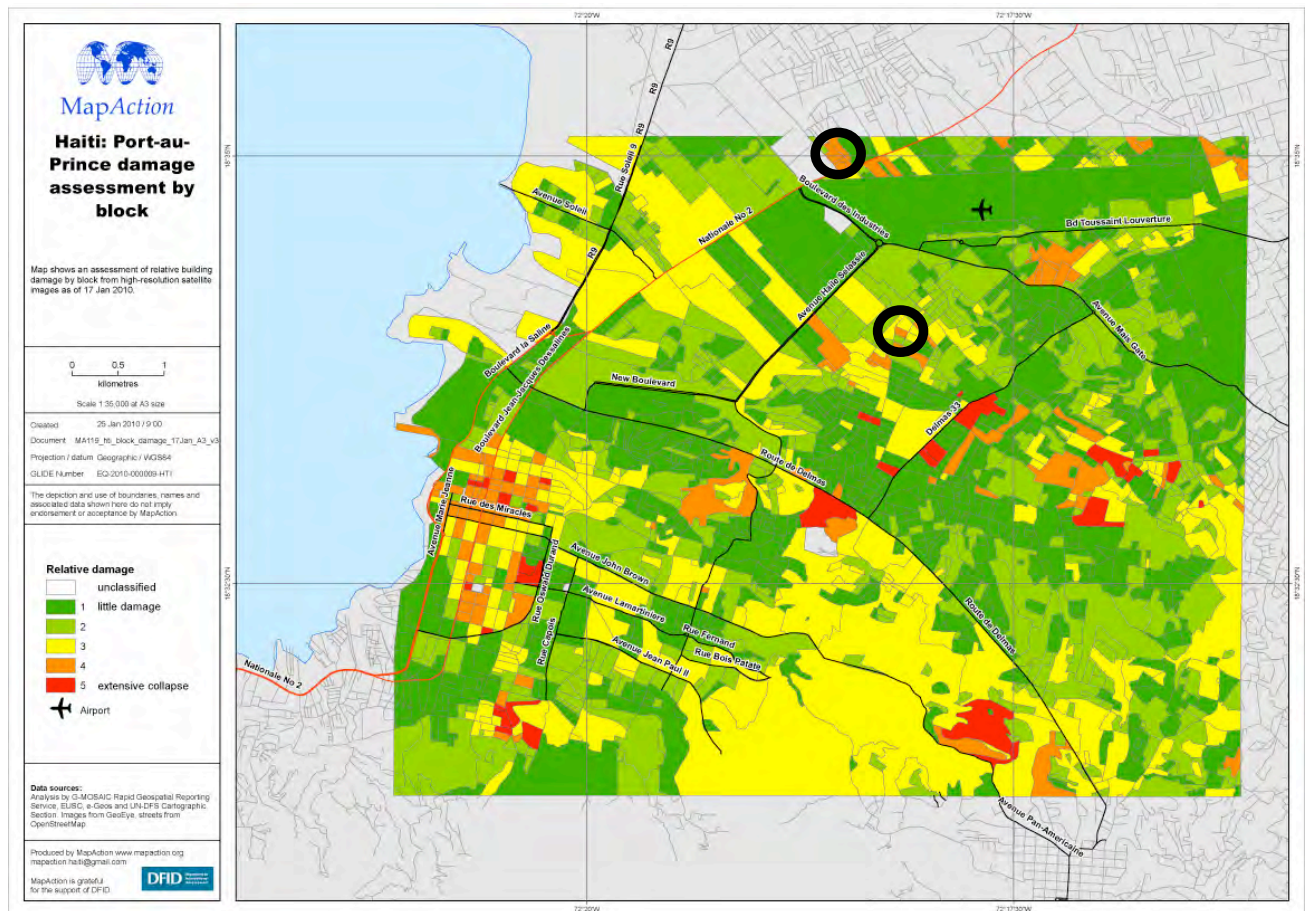
Bright Hope is aware of 19 potential church partnerships in PAP. After review of these potential partnerships, and considering factors such as “relationships to other NGOs (i.e. World Vision, etc.) and carefully considering our own ability to help with long-term needs, we chose two PAP churches for us to focus our relief and development help; the Eglise Baptiste Church (in the community of Delmas 33) and the Eglise Baptiste Fraterite de Drouillard (next to the community of Cite Soleil). Note: While titled “Baptist” churches these congregations are not affiliated with any Baptist denomination; they are evangelical churches.

Both churches are ministering to communities of about 2000 people. Many church members have been killed and a lot of people in the community have had their homes destroyed or heavily damaged. Some have left PAP for safer areas of the country.

Tent cities have sprung up spontaneously, and fears are extremely high, and supplies extremely short. Like handling dry kindling, we must act carefully and cautiously.

Bright Hope feels especially led to help these communities as we were the first agency to visit them and offer help. We immediately initiated relief aid deliveries of food and have supported these leaders and their efforts from the beginning of our relief aid program.

The two areas circled below are the locations of these churches and tent cities:



## Pignon

The Pignon Mission was founded in 1977 by Pastor Sidoine Lucien as the Jerusalem Baptist Church of Pignon. Currently Pastor Jephthe Lucien (Sidoine's son) leads the work of the ministry as its National Director, including the main church and 40 satellite churches and schools. Pastor Lucien oversees a diverse ministry that includes training future church leaders, developing youth groups and Bible studies, church planting, community outreach programs and economic development projects. Pastor Jephthe helped found and is president of the Pignon Association of Churches which includes 50 Christian churches.

During our years of partnership with Pastor Jephthe we have delivered dozens of containers of relief materials, launched a grinding mill operation, chicken farm, micro-loan program, school feeding program and Hope Pack programs.

## **Immediate Relief Aid Program (see summary and detailed budget at the end of this proposal)**

### **1) Port-au-Prince (PAP) Relief Costs**

The relief effort in PAP centers on our two church partners. Safety and security is of primary concern both for the people receiving the relief aid and those delivering it. We have determined the safest place to stage our supplies is in Pignon. Since the second day of the earthquake supplies have been driven from Pignon and delivered via small trucks to our two partners. In these two communities we are serving a combined total of 4400 meals per day and we have committed to continue this effort through March 31<sup>st</sup>. Although food is the primary need, medical supplies and other items requested are also being picked up and delivered. Bright Hope has secured donations from government programs and other NGOs to deliver to our partners in PAP.

Total cost of food, supplies and delivery costs is \$1,680 per day.

### **2) Containers of medical supplies, food and other materials**

Massive medical needs exist in Haiti following the 12 January, 2010, earthquake. The World Health Organization (WHO) has issued guidelines for donations of medicines and medical supplies to support the relief effort. WHO recommends that potential donors follow these guidelines to ensure appropriate supplies are being provided to match needs on the ground. Bright Hope is following these guidelines as well as receiving guidance from MAP International and recommendations from our own Partners.

Bright Hope has determined to send seven shipments of materials to Haiti over the coming few weeks. We are hoping for donated materials to fill these but when needed we are purchasing supplies. To get a container from Chicago to Haiti and ground distribution will cost between \$10,000-15,000 per container. Here is a list of the shipments sent and planned:

**1-4. Food** (four full containers), cost \$45,000 each, one container has already been donated and is on its way, 240,000 meals per container.

**5. Medical supplies**, we have received \$1,000,000 of medical supplies for about \$14,375. These are due to fly into PAP within a few days, picked up by our team and distributed to our partners and local hospitals. These supplies will assist about 30,000 people.

**6. Solar ovens**, we have received a large solar oven capable of producing 1400 meals per day, valued at \$10,500, and 60 family-sized solar ovens valued at \$180 each.

**7.** We would like to send a truck, spare truck tires, 15,000 Med Packs and a satellite communications system along with more food in a container, as those items are acquired.

**8. TENTS** - Displaced families in Haiti have setup makeshift temporary communities using whatever materials they can find – blankets, plywood, tin, etc. These "shelters" are dangerous, unsanitary, and offer little protection. Bright Hope is addressing this immediate need for shelter by providing top quality tents. They are 12' x 7' and can hold up to six people. They are easy to assemble and move, and are also weatherproofed to protect families from the upcoming rainy season. **Goal is 1000 tents.** **Local churches** have a need for larger tents where families can congregate, worship and hold services. These larger tents are 30' x 32' and can hold up to 200 people. **\$3500 each – Goal 4 tents.**

### **3) Supplemental Food Program - IDPs**

25Kg bags of rice, beans, and cooking oil (a month's worth of supplemental food) are being given to 600 families; enough food to provide for 4400 people served per day. Recipient families are IDPs (Internally Displaced People) from Port-au-Prince or families that have taken in relatives from PAP. We are spending \$1075 per day on this rice distribution.

While estimates range widely IDPs from PAP are expected to climb to about 1,000,000 within the next 12 weeks. Our church partner in Pignon estimates that the population in and around Pignon has climbed by about 30,000, although no official numbers have been released.

We are planning for distribution to continue for as long as needed even though our budget reflects a March 31 end date.

### **4) Counseling Center - IDPs**

The core component to effective and efficient IDP ministry is to understand the circumstances and needs of each individual and family. With so many IDPs arriving in Pignon Pastor Jephthe Lucien, quickly started a counseling center.

With help from the local hospital they developed an intake form and began meeting with families that were requesting help from the church. Now they have hired 12 counseling college graduates to interview these IDPs and are resourcing them to give help to those in need. These 12 counselors are meeting with between 40-60 families a day, and the number is climbing higher each day. Counselors are able to help families with food support, qualify the family for the ongoing food supplement program, orphan support, medical supplies or medical care, IDP camp placement, and even pre-qualify them for the microloan program.

Cost of running this counseling center until March 31 is \$550 per day. This covers the cost of assistance to the IDP and a small salary for the counselors.

### **5) Internally Displaced People Camp**

Some PAP earthquake victims coming to Pignon do not have relatives or friends that they can live with. So the Counseling Center is referring them to a school soccer field where shelters and resources are being made available to them. Only 57 people are currently in the camp but many more are expected. Our first line of help is to have them attend the counseling program and become a part of the other activities. However the Jerusalem Baptist church is putting on programs for the children and teens living there as well as Bible studies and programs for the adults, many who are living in the camp are experiencing grieving and painful memories. One woman from the camp is so scared by the memory of the earthquake she will not enter any concrete or brick building.

We have allocated \$195 per day to establish and run these IDP programs.

## **6) Support of Pastors and Ministry**

Pastors and ministry leaders have experienced tremendous losses. Some have had family members die, church members killed and lost their own homes. It is a challenging time to lead and we have to consider these precious leaders and their needs.

We are allocating \$600 per day for the leaders and their ministries to help with personal needs and costs of ministering (phones, gasoline, vehicles, etc., etc.) Jephthe Lucien and Jerusalem Baptist Church; Irfonse Pierre and Senior Pastor from the Eglise Baptiste Church; and Pastor Charles Louchis of Eglise Baptiste Fraterite de Drouillard and their teams are being blessed by this personal care and that of their team members.

## **Phase Two – Long Term Needs and Solutions**

### **1) Micro-Loan Program**

Already having a successful microloan program going in Pignon for the last 2 years we have a good structure and base to add refugee families and also start a new program in PAP. The program will include training and be run by the local churches (the association of 50 churches in Pignon and our 2 church partners in PAP). It will be a 4 step program offering low interest loans for 6 months, starting at \$50 and increasing each loan cycle to \$100, \$150 and \$250 respectively. In Pignon this loan program will serve association church families who have taken in orphans and vulnerable children from PAP, as well as some IDP families.

We need a minimum of 100 families sponsored to start the program in each location. Sponsorship costs \$360 for each loan, this includes the loan cost, training and Haitian administrative costs. We are aiming to have 500 families involved in a loan program in PAP and another 500 families in Pignon.

### **2) Orphan and Vulnerable Children Education and Care Program**

Much has been written and said about the orphan situation in Haiti. Bright Hope is in a unique position to have some very successful orphan programs in Haiti. Over 65% of our projects are involved in orphan and vulnerable children programs. For the last five years we have partnered with a 22 church association to care for orphans and vulnerable children in a rural town in Zambia. The orphan and vulnerable children care program in Samfya, Zambia is on the cutting edge of NGO best practices and has 970 families caring for 1000 orphans and vulnerable children.

Through our partnership with the 50 member church association in Pignon we are taking the model in Samfya and transforming it to work in Haiti. Currently we are working with the churches to assess the number of families who would be willing to care for one or more orphans and vulnerable children. These guardian families would receive training and regular visits by caregivers from the churches and the privilege to apply for a microloan. Orphans and vulnerable children would have their school fees, lunch program and school materials expenses covered by Bright Hope.

It is our hope for 500 families to step forward and care for 500 orphan and vulnerable children.

## **An Activity Project for your Church or Group.**

### **MED PACKS**

Med Packs (an activity for churches, Sunday schools, and small groups to impact Haiti's earthquake victims) are hygiene kits for Haitian families affected by the earthquake to use for basic needs. A sponsored Med Pack costs \$30 and Bright Hope will fill a Med Pack on your behalf. The contents include: Soap, Bacitracin ointment, Tissue, Vaseline, Toothbrush, Toothpaste, Bandages, Power, Qtips, lotion and a washcloth. A Creole picture Bible is added to each pack. These packs are shipped from Chicago to Haiti and distributed by local church members. Church members pray with recipient families as they deliver them. For the victim families this small box is a huge blessing.



The Bible is the lasting item but the new friendships and relationship with a local church leads to all sorts of blessings and people finding eternal hope in Christ.

Bright Hope has a second option for groups, Sunday school classes, and churches to fill Med Packs. "Starter kits" are blank boxes that we ask you to decorate (see photo containing decorated box) and fill with the same contents as mentioned above. Some groups plan to do this activity as a group event; others offer it to families and church members individually. It is such a great moment when all the boxes are returned, the artwork displayed on stage or around the room, and the packs dedicated. Having run this program for years, we consistently hear how this simple project leads families and individuals to talk about the plight of the poor and leads them to more involvement in compassion and missionary activities. For filling Med Packs, starter kits are sold for \$15 each, in boxes of 20 Packs for \$300.

Ordering Starter kits (you fill) or sponsored (we fill) Med Packs is done via our website: [www.BrightHope.org](http://www.BrightHope.org)

## **Budget and Current Donations**

A budget is attached to the end of this document with specifics of the program mentioned in the narrative above. Bright Hope has received approximately \$200,000 in cash donations and over a million dollars in donated materials. We need your help to serve these churches and their congregations and communities. Please help.

Donations to a particular item in the program will be applied to that program item. If excess funds are received for a line item, those funds will be applied to other items within the project. A standard fifteen percent administrative fee is applied to all contributions received by Bright Hope for the ministry. For every one dollar given to Bright Hope's general fund, five dollars of assistance is given to the field. It is our

preference is to receive general donations to meet the most urgent needs but we always respect the wishes of the donor.

## Send Gifts and Assistance to:

Bright Hope International  
2060 Stonington Avenue  
Hoffman Estates, IL 60169

Phone 224-520-6100

Project lead: Mike Rutter, Director of Partnerships and Programs  
(Mike.Rutter@Brighthope.org)

President: Craig Dyer (Craig.Dyer@BrightHope.org)

A Detailed Budget follows this summary.

<b>Summary Budget For Haiti Relief and Development</b>				
<b><i>Item</i></b>	<b><i>Unit (Day, person)</i></b>	<b><i>Goal</i></b>	<b><i>Impact</i></b>	
Food Relief in PAP		\$1,680	\$129,360	feeding 4000 people
Containers	Various		\$253,375	feeding 13,960, medical supplies to help 30,000
Supplemental food for IDPs		\$1,075	\$82,775	4400 people fed 3,850 IDP families served food, medicine, blankets, housing, etc.
Counseling Center for IDPs		\$550	\$23,870	60-500 people with Shelter, programs, food, services, etc.
IDP Camp		\$195	\$15,015	Caring for the "engines" which drive the programs-
Support of three ministries		\$600	\$46,200	Priceless impact
Micro-loan Program – PAP		\$360	\$180,000	500 families
Micro-loan Program - Pignon		\$360	\$180,000	500 families
Orphan and Vulnerable Children Education and Care		\$207	<u>\$103,500</u>	500 Orphans and Vulnerable Children
			\$1,014,095	

**Detailed Budget**

**1) Port-au-Prince Relief costs**

<u>Location</u>	<u># of 25kg bags</u>	<u>Pounds</u>	<u>meals per pound</u>	<u>Total Meals</u>	<u>Cost per 25 kg bag</u>	<u>Total cost for rice</u>	<u>Beans</u>	<u>Oil</u>	<u>Transport to Pignon</u>	<u>Transport to PAP</u>	<u>Total Cost</u>
Delmas 33	10	550	4	2200	\$24	\$240	\$55	\$55	\$55	\$330	\$735
Pastor Charles	10	550	4	2200	\$24	\$240	\$55	\$55	\$55	\$330	\$735
Misc											\$210
<b>Total</b>	<b>20</b>	<b>1100</b>		<b>4400</b>							<b>\$1,680.00 per day</b>
											Goal 77 days
											<b>\$129,360</b>

**2) Containers and Material values/costs**

	<u>Contents</u>	<u>Value, each</u>	<u>Cost of materials</u>	<u>Shipping</u>	<u>Total</u>
Container #1	Food - 240,000 meals	\$45,000	donated	\$12,500	\$12,500
Container #2	Food - 240,000 meals	\$45,000	\$45,000	\$12,500	\$57,500
Container #3	Food - 240,000 meals	\$45,000	\$45,000	\$12,500	\$57,500
Container #4	Food - 240,000 meals	\$45,000	\$45,000	\$12,500	\$57,500
Shipment #5 - via air to PAP	Medical	\$1,000,000	Mostly donated, \$14,375	\$5,000	\$19,375
Container #6	Solar Ovens, Medical, Food Truck, spare tires, food, medical, med packs, etc.	\$50,000	\$24,000	\$12,500	\$36,500
Container #7		Undetermined	Undetermined	\$12,500	\$12,500
					<b>\$253,375</b>

### 3) Supplemental Food Costs - IDPs

Location	# of 25kg bags	Pounds	meals per pound	Total Meals	Cost per 25 kg bag	Total cost for rice	Beans	Oil	Transport to Pignon	Transport to PAP	Total Cost
Pignon	20			4	4400	\$24	\$480	\$55	\$55	\$275	\$865
Misc											\$210
Total											\$1,075.00 per day
											Goal 77 days \$82,775

### 4) Counseling Center - IDPs

Description	Amount	
Operating Costs	\$220	12 counselors offered a two-month contract at \$220usd/counselor/month. \$2640/month expense
Medical Referrals	\$330	These costs will scale back significantly after first three weeks
Total	\$550	per day
	Goal 77 days	\$23,870

21 days at \$550 and 56 days at \$220

### 5) IDP Camp

Description	Amount	
Operating Costs	\$195	per day
Location	\$0	Donated by Hosean Int'l Ministries
Total	\$195	per day
	Goal 77 days	\$15,015

### 6) Support of Pastors and Ministry

Description	Amount	
Support	\$600	Vehicle maint, cell phone, laptop, infrastructure upgrades
Total	\$600	per day, for all three ministry partners.
	Goal 77 days	\$46,200

**7) Micro-loan Asst Program**

<u>Description</u>	<u>Amount</u>		
Loan capital	\$250		
Training	\$38		
Administrator	\$22		
Admin supplies	\$11	Loan booklets, gas, copies, etc	
Project Management	\$39		
<b>Total</b>	<b>\$360</b>	Minimum of 100 clients to start =	\$36,000
	Goal 500 PAP	\$180,000	
	Goal 500 Pignon IDPs/orphan and vulnerable children families	\$180,000	

**8) Orphan and Vulnerable Children Educ and Care Asst Program**

<u>Description</u>	<u>Amount</u>	
Education Support School Lunch Program	\$110	Includes tuition, uniform, book, etc.
Project Management	\$75	
	\$22	
<b>Total</b>	<b>\$207</b>	Annual per orphan
	Goal 500 Orphans and Vulnerable children	\$103,500